

www.tresore  ch
WALDIS

Maximum Security
Outstanding Swiss Quality



Can't crack
them.

Warranty of up
to 30 years
against burglary





Markus Wirth

Owner and CEO of
WALDIS Tresore AG

“Our goal is to continue – with an even stronger focus – to build the best safes in the world. Every day we work with dedication and motivation to make sure our products inspire our customers and that they impede any dark designs others might hope to carry out, following our claim: WALDIS Safes. Nobody can crack them!”

For over 35 years, WALDIS Safes have impressively demonstrated their competence in Switzerland and throughout Europe. Founded in 1983, WALDIS has since delivered around 30,000 safes, strongrooms and fire protection cabinets, thus making an international name for itself in the field of secure storage unit production with the highest security level. Customers and their high demands have always been the focus of our company's philosophy, and have always been at the forefront of every product and product development. This will remain so in the future. A highly qualified team of long-standing employees ensures that WALDIS products keep and exceed what our customers expect every day.

WALDIS safes are among the most burglar-proof on the market and are tested according to the European standard EN1143-1. This standard defines their resistance to burglary. It is not for nothing that the Swiss market leader is the only one to offer a guarantee against burglary for up to 30 years. Consistently and logically, the company also works according to the ISO 9001 quality management system for these highest quality requirements. WALDIS is also a member of Swiss Label.

Thanks to in-house development and production, the safety products and systems not only convince with the highest quality, but also with modern aesthetics.

We protect your values.



WALDIS safes enjoy an outstanding reputation	4
Safes with Resistance grade 2 according to EN 1143-1: WALDIS Eco – 5 year warranty against burglary!	5
Safes with Resistance grade 3 according to EN 1143-1: WALDIS Business – 20 year warranty against burglary!	6
Safes with Resistance grade 4 according to EN 1143-1: WALDIS First – 25 year warranty against burglary!	7
Safes with Resistance grade 5 according to EN 1143-1: WALDIS Premium – 30 year warranty against burglary!	8
Electronic locks WALDIS safes	9/10
Safe fittings WALDIS safes	11
Key pull-outs WALDIS safes	12
General WALDIS safes	13
Dimensional specifications WALDIS safes	14
Complete security guaranteed!	15



WALDIS safes enjoy an outstanding reputation

The provision of well over 20,000 safes and more than 30 years' experience mean we have unique expertise when it comes to producing safes.



WALDIS has set itself the objective of producing storage units that are not only the most secure in terms of protecting valuables, but are also of the highest quality of manufacture and design.

The best reason for this is based on burglary prevention. It is recommended not to hide secure safes, but rather to place them somewhere where an offender can see them easily.

WALDIS provides lasting protection for your valuables

WALDIS safes enjoy an outstanding reputation with customers and insurance companies alike. They are regarded as among the most burglar-proof products on the market. Where WALDIS safes are concerned, the only ones who will find themselves disappointed in our products are safebreakers.

**Up to
30 years
warranty
against
burglary!**

WALDIS Eco

Resistance grade 2 according to EN 1143-1



WALDIS Eco 550



WALDIS Eco 650

Protection class and insurance cover

- VdS approval no. M119008
- Resistance grade 2 according to EN 1143-1
- 5-year WALDIS warranty against burglary
- Contents with a value of up to CHF 50,000 or CHF 100,000 can be insured

Design and security

- 50 mm wall thickness, 115 mm door thickness
- Locking mechanism behind glass panel
- 4 mechanical emergency locking devices
- Internal hinges with thrust bearings
- Practically gap-free door closure
- Cable inlet via hollow hinges
- 4 mounting options
- Door opening angle > 180 degrees/ DIN hinges on right
- 6 different sizes in stock

Basic features

- Primor 3000 electronic combination lock
- Height-adjustable chromium steel shelf
- High-quality chromium steel interior design
- RAL 9010 pure white paint finish

Accessories

- Safe interiors/cash drawers from WALDIS 802
- Jewellery storage
- User-friendly base
- LED interior lighting
- Additional electronic locks
- Alarm integration and preparation
- Paint finishes of your choice
- Watch winder
- Key storage etc

Model Eco	External dimensions H×W×D in mm	Internal dimensions H×W×D in mm	Capacity in l	Weight in kg	Shelves incl.	Price in CHF excl. VAT
550	550×500×500	407×359×330	48	210	1	3'800.00
650	650×500×500	507×359×330	60	240	1	4'500.00
801	800×500×500	657×359×330	78	285	1	5'000.00
802	800×620×520	657×479×350	110	340	1	5'600.00
1000	1000×620×520	857×479×350	144	405	2	6'300.00
1200	1200×620×520	1057×479×350	177	470	2	7'200.00

Depth (D) including handle +60 mm

* Without alarm / with alarm system. The values specified are average values from insurance companies. The insurance companies are free in principle to conduct their risk assessment.

Resistance grade 3 according to EN 1143-1



Protection class and insurance cover

- VdS approval no. M119009
- Resistance grade 3 according to EN 1143-1
- 20-year WALDIS warranty against burglary
- Contents with a value of up to CHF 150,000 or CHF 300,000 can be insured

Design and security

- 50 mm wall thickness, 115 mm door thickness
- Locking mechanism behind glass panel
- 4 mechanical emergency locking devices
- Internal hinges with thrust bearings
- Practically gap-free door closure
- Cable inlet via hollow hinges
- 4 mounting options
- Door opening angle > 180 degrees / DIN hinges on right
- 11 different sizes in stock

Basic features

- Primor 3000 electronic combination lock
- Height-adjustable chromium steel shelf
- High-quality chromium steel interior design
- RAL 9010 pure white paint finish

Accessories

- Safe interiors / cash drawers from WALDIS 802
- Jewellery storage
- User-friendly base
- LED interior lighting
- Additional electronic locks
- Alarm integration and preparation
- Paint finishes of your choice
- Watch winder
- Key storage etc.

Model Business	External dimensions H×W×D in mm	Internal dimensions H×W×D in mm	Capacity in l	Weight in kg	Shelves incl.	Price in CHF excl. VAT
650	650×500×500	507×359×330	60	240	1	5'400.00
801	800×500×500	657×359×330	78	285	1	6'200.00
802	800×620×520	657×479×350	110	340	1	6'900.00
1000	1000×620×520	857×479×350	144	405	2	7'600.00
1200	1200×620×520	1057×479×350	177	470	2	8'900.00
1450	1450×720×640	1307×579×470	356	690	2	11'500.00
1650	1650×720×640	1507×579×470	410	770	2	12'100.00
1200 XL	1200×890×730	1057×749×560	443	740	2	12'100.00
1450 XL	1450×890×730	1307×749×560	548	860	2	12'900.00
1850 XL	1850×890×730	1707×749×560	716	1055	2	13'900.00
1850 XXL	1850×1145×730	1707×1004×560	960	1250	2	17'700.00

Depth (D) including handle +60 mm

* Without alarm / with alarm system. The values specified are average values from insurance companies. The insurance companies are free in principle to conduct their risk assessment.

WALDIS First

Resistance grade 4 according to EN 1143-1

25
year warranty
against burglary!



WALDIS First 1200

Protection class and insurance cover

- VdS approval no. M110021
- Resistance grade 4 according to EN 1143-1
- Contents with a value of up to CHF 500,000 or CHF 1,000,000 can be insured*
- 25-year WALDIS warranty against burglary

Design / security

- 4 different sizes in stock
- 65 mm wall thickness
- 130 mm door thickness
- Locking mechanism behind glass panel
- 8 mechanical emergency locking devices
- Internal hinges with thrust bearings
- Practically gap-free door closure
- Cable inlet via hollow hinges
- 8 mounting options
- Door opening angle > 180 degrees / DIN hinges on right

Basic features

- Paxos Advance IP redundant electronic high-security double lock
- Height-adjustable chromium steel shelves
- High-quality chromium steel interior design
- RAL 9010 pure white paint finish

Accessories

- Safe interiors / cash drawers
- Jewellery storage
- User-friendly base
- LED interior lighting
- Additional electronic locks
- Alarm integration and preparation
- Paint finishes of your choice
- Watch winder
- Key storage
- etc.

Model First	External dimensions H x W x D in mm	Internal dimensions H x W x D in mm	Capacity in l	Weight in kg	Shelves incl.	Price in CHF excl. VAT
850	850 x 640 x 523	678 x 474 x 320	107	520	1	9'200.00
1000	1000 x 640 x 523	828 x 474 x 320	130	585	2	10'800.00
1200	1200 x 640 x 523	1028 x 474 x 320	160	675	2	11'500.00
1500	1500 x 640 x 603	1328 x 474 x 400	260	900	2	14'200.00

Depth (D) including handle +60 mm

* Without alarm / with alarm system. The values specified are average values from insurance companies. The insurance companies are free in principle to conduct their risk assessment.

WALDIS Premium

Resistance grade 5 according to EN 1143-1

30
year warranty
against burglary!



WALDIS Premium 1500

Protection class and insurance cover

- VdS approval no. M110019
- Resistance grade 5 according to EN 1143-1
- Contents with a value of up to CHF 1,000,000 or CHF 2,000,000 can be insured*
- 30-year WALDIS warranty against burglary

Design / security

- 7 different sizes in stock
- 65 mm wall thickness
- 130 mm door thickness
- Locking mechanism behind glass panel
- 10 mechanical emergency locking devices
- Internal hinges with thrust bearings
- Practically gap-free door closure
- Cable inlet via hollow hinges
- 8 mounting options
- Door opening angle > 180 degrees / DIN hinges on right

Basic features

- Paxos Advance IP redundant electronic high-security double lock
- Height-adjustable chromium steel shelves
- High-quality chromium steel interior design
- RAL 9010 pure white paint finish

Accessories

- Safe interiors / cash drawers
- Jewellery storage
- User-friendly base
- LED interior lighting
- Additional electronic locks
- Alarm integration and preparation
- Paint finishes of your choice
- Watch winder
- Key storage
- etc.

Model Premium	External dimensions H×W×D in mm	Internal dimensions H×W×D in mm	Capacity in l	Weight in kg	Shelves incl.	Price in CHF excl. VAT
850	850 × 640 × 523	678 × 474 × 320	107	540	1	11'800.00
1000	1000 × 640 × 523	828 × 474 × 320	130	620	2	12'900.00
1200	1200 × 640 × 523	1028 × 474 × 320	160	730	2	13'900.00
1500	1500 × 640 × 603	1328 × 474 × 400	260	950	2	16'500.00
1000TB	1000 × 800 × 743	828 × 634 × 540	290	900	2	17'500.00
1200TB	1200 × 800 × 743	1028 × 634 × 540	360	1100	2	20'500.00
1500TB	1500 × 800 × 743	1328 × 634 × 540	460	1200	2	22'300.00

Depth (D) including handle +60 mm

* Without alarm / with alarm system. The values specified are average values from insurance companies. The insurance companies are free in principle to conduct their risk assessment.

Electronic locks WALDIS safes



Primor



Axessor



Axessor with
chrome cover

Technical data Primor 1000/3000

- Electronic motor-driven lock
- 1 user code / 1,000,000 possible codes
- Increasing lockout time after 3 false entries
- Battery mode / easy battery replacement from outside
- Keypad housing: chrome
- Installation from WALDIS 550
- Warranty: 2 years

Technical data Axessor USB

- Electronic motor-driven lock
- 18 user codes / 21,000,000 possible codes
- 1 master and 2 manager codes
- Lockout time after 3 false entries
- Easy-to-read display
- Simple, self-explanatory menu navigation
- Time functions: daily, weekly, annual lockout times
- Programmable opening time delay
- Logs up to 4,800 events
- Integration into alarm system / silent alarm
- Battery mode / easy battery replacement from outside
- Keypad housing: black RAL 9005
- Installation from WALDIS 650
- Warranty: 2 years

Technical data Axessor IP

- Data different from or additional to the Axessor USB:
- 36 user codes / 41,000,000 possible codes
 - 1 master and 4 manager codes
 - Optional management online
 - Optional 230 V mains connection

Electronic locks WALDIS safes



Paxos Advance IP with keypad and chrome-plated keypad cover



Paxos Advance IP with keypad

Technical data Paxos Advance IP

- Redundant electronic motor-driven lock, all components are in duplicate = maximum operational reliability
- 95 user codes/ 100,000,000 possible codes
- 1 master code
- Easy-to-read illuminated display
- Lockout time after 4 false entries
- Simple, self-explanatory menu navigation
- Time functions: daily, weekly, annual lockout times
- Programmable opening time delay
- Logs up to 10,000 events
- Integration into alarm system/ silent alarm
- Remote lockout
- Battery mode/ easy battery replacement from outside
- Optional 230 V mains connection
- Keypad housing: black RAL 9005 as standard, chrome version included in the PREMIUM line
- Keypad or dial input
- Optional management online
- Installation from WALDIS 550
- Warranty: 2 years

Article	Description	Price in CHF excl. VAT
Primor 1000	Electronic security lock including keypad input unit (included in the basic price for WALDIS Basic)	650.00
Primor 3000	Electronic security lock including keypad input unit (included in the basic price for WALDIS Eco/WALDIS Business)	650.00
Axessor USB	Electronic security lock including keypad input unit (from WALDIS 650)	1'200.00
Axessor USB	Additional cost in comparison to PRIMOR 1000/3000	550.00
Axessor IP	Electronic security lock including keypad input unit (from WALDIS 650)	1'450.00
Axessor IP	Additional cost in comparison to PRIMOR 1000/3000	800.00
Axessor	Mains connection (from WALDIS 650)	470.00
Axessor	Management online (from WALDIS 650)	On request
Axessor	Chrome-plated keypad housing	290.00
Axessor	Alarm preparation (from WALDIS 650)	320.00
Axessor	Alarm preparation including mains connection (from WALDIS 650)	595.00
Paxos Advance IP	Electronic high-security lock including keypad input unit (from WALDIS 550) included in the basic price for WALDIS First/WALDIS Premium	1'750.00
Paxos Advance IP	Additional cost in comparison to PRIMOR 1000/3000	1'100.00
Paxos Advance IP	Electronic high-security lock including dial input unit (from WALDIS 650)	2'150.00
Paxos Advance IP	230 V mains connection recommended from WALDIS First (from WALDIS 801)	1'300.00
Paxos Advance IP	Alarm preparation (from WALDIS 801)	1'050.00
Paxos Advance IP	Alarm preparation including mains connection (from WALDIS 801)	1'480.00
Paxos Advance IP	Management online	On request
Paxos Advance IP	Chrome-plated keypad cover; included in the basic price for WALDIS Premium	250.00
Base plate	for seismic detector in the safe door from WALDIS 801	55.00
Base plate	for seismic detector in the safe door, 6 m retracted alarm cable, from WALDIS 801	180.00

Safe fittings WALDIS safes

Configure your safe according to your requirements



1 Safe interior

- DIN hinges on right
- Chromium steel design
- Electronic combination lock
- Installation from WALDIS 802

2 Cash drawer

- With note and coin compartments
- Chromium steel design
- Kaba 8 key lock
- Installation from WALDIS 802 (not XL/TB models)

3 Adjustable shelf

- Individual arrangement
- Chromium steel design
- 25 mm grid
- Including shelf support
- Max. load capacity: 30 kg/shelf
- Installation from WALDIS 550

4 Pull-out shelf

- Well-arranged storage
- Chromium steel design
- Fully extendable
- 50 mm high
- Max. load capacity: 30 kg/shelf
- Installation from WALDIS 550

5 Fire dam sealing

Article	Description	Installation height (mm)	Price in CHF excl. VAT
Safe Interior	WALDIS 802 to WALDIS 1200	150	750.00
Safe Interior	WALDIS 1450 to WALDIS 1650	150	790.00
Safe Interior	WALDIS 1200 XL to WALDIS 1850 XL		
	WALDIS 1000 TB to WALDIS 1500 TB	200	985.00
Cash Drawer	WALDIS 802 to WALDIS 1200: External height 150 mm, Pecuna coin insert, note compartments, KABA-Star		1'250.00
Adjustable Shelf	WALDIS 550 to WALDIS 801		55.00
Adjustable Shelf	WALDIS 802 to WALDIS 1200		75.00
Adjustable Shelf	WALDIS 1450 to WALDIS 1650		90.00
Adjustable Shelf	WALDIS 1200 XL to WALDIS 1850 XL		
	WALDIS 1000 TB to WALDIS 1500 TB		105.00
Pull-out Shelf	WALDIS 550 to WALDIS 801	70	250.00
Pull-out Shelf	WALDIS 802 to WALDIS 1200	70	280.00
Pull-out Shelf	WALDIS 1450 to WALDIS 1650	70	380.00
Pull-out Shelf	WALDIS 1000 TB to WALDIS 1500 TB		
	for XL models: price on request	70	460.00
Fire dam sealing			100.00

Base WA safes

Ergonomically comfortable.

Can be operated from a base at a comfortable height.



Design

- Same design as WALDIS safes
- Internal hinges
- Electronic combination lock
- DIN hinges on right
- RAL 9010 pure white paint finish
- Sizes for WALDIS 550 to WALDIS 1200

Benefits

- Safe can be operated very conveniently
- Access protection such as for documents

Article	Description	H × W × D (mm)	Capacity (L)	Weight (kg)	Price in CHF excl. VAT
Base	WALDIS 550 to WALDIS 801	550 × 500 × 500	135	45	990.00
Base	WALDIS 802 to WALDIS 1200	550 × 620 × 520	175	55	1'250.00

General WALDIS Tresore



Your individual colour
of choice –
to match your interior

- On request, your WALDIS Safe, including base, can shine on the outside in textured or high-gloss finish.
- All RAL colours are available

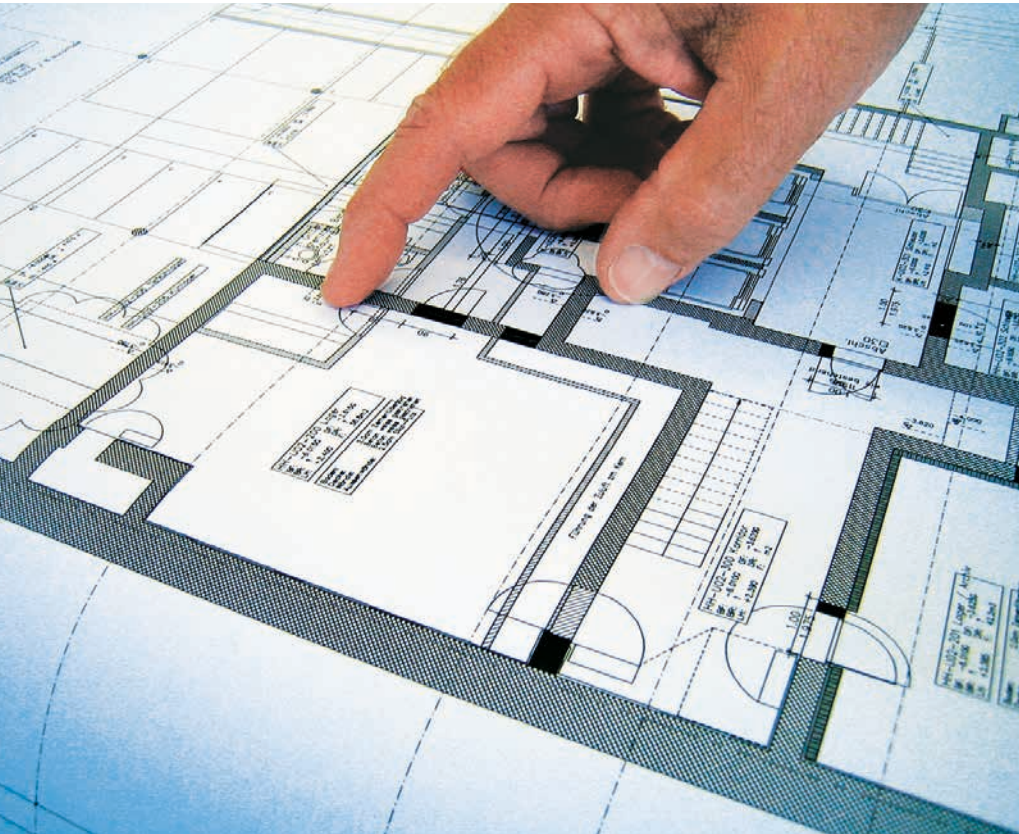
We bring light into
the darkness –
Illumination of the safe
interior with LED

- The LED lighting is provided laterally, on the right and at the bottom.
- Power supply unit 12 VDC/36 W
- Requires an external 230 V socket

Article	Description	Price in CHF excl. VAT
Textured Paint Finish	WALDIS 480 to WALDIS 850	450.00
Textured Paint Finish	WALDIS 1000 to WALDIS 1650	650.00
Textured Paint Finish	WALDIS 1200 XL to WALDIS 1850 XL WALDIS 1000 TB to WALDIS 1500 TB	900.00
Textured Paint Finish	Base for WALDIS 550 to WALDIS 1200	250.00

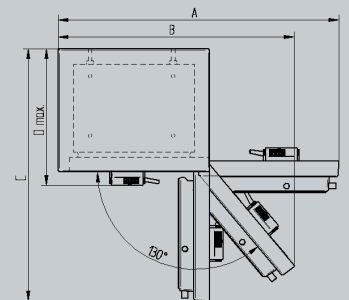
Article	Description	Price in CHF excl. VAT
WALDIS 550 to WALDIS 801		
LED Lighting	2 strip lights horizontal	350.00
3. LED light strip	1 additional light strip horizontal	68.00
WALDIS 802/WALDIS 850		
LED Lighting	2 strip lights horizontal	350.00
3. LED light strip	1 additional light strip horizontal	75.00
additional LED light strip	max. 2 additional strip lights horizontal	80.00
WALDIS 1000 to WALDIS 1650		
LED Lighting	3 strip lights horizontal	450.00
additional LED light strip	max. 2 additional strip lights horizontal	80.00
WALDIS 1200 XL to WALDIS 1850 XL WALDIS 1000 TB to WALDIS 1500 TB		
LED Lighting	3 strip lights horizontal	480.00
additional LED light strip	max. 2 additional strip lights horizontal	95.00

Dimensional specifications WALDIS Tresore



WALDIS safe Dimensional specifications to be taken into account

- DIN hinges always on right
- Take the safe depth into account during installation (see D max.)
- Take the opening of the safe door into account during installation (see dimensions table)
- 2-point mounting on rear wall and floor possible



Model	Dim. Outside	Dim. Inside	Dimension with open door in (mm):			
			A	B	C	D
ECO 550	550 × 500 × 500	407 × 359 × 330	920	777	920	550
ECO/BUSINESS 650	650 × 500 × 500	507 × 359 × 330	920	777	920	560
ECO/BUSINESS 801	800 × 500 × 500	657 × 359 × 330	920	777	920	560
ECO/BUSINESS 802	800 × 620 × 520	657 × 479 × 350	1160	975	1060	580
ECO/BUSINESS 1000	1000 × 620 × 520	857 × 479 × 350	1160	975	1060	580
ECO/BUSINESS 1200	1200 × 620 × 520	1057 × 479 × 350	1160	975	1060	580
BUSINESS 1450	1450 × 720 × 640	1307 × 579 × 470	1360	1139	1280	700
BUSINESS 1650	1650 × 720 × 640	1507 × 579 × 470	1360	1139	1280	700
BUSINESS 1200-XL	1200 × 890 × 730	1057 × 749 × 560	1700	1418	1540	790
BUSINESS 1450-XL	1450 × 890 × 730	1307 × 749 × 560	1700	1418	1540	790
BUSINESS 1850-XL	1850 × 890 × 730	1707 × 749 × 560	1700	1418	1540	790
BUSINESS 1850-XXL	1850 × 1145 × 730	1707 × 1004 × 560	2210	1837	1794	790
FIRST/PREMIUM 850	850 × 640 × 523	678 × 474 × 320	1188	1000	1071	583
FIRST/PREMIUM 1000	1000 × 640 × 523	828 × 474 × 320	1188	1000	1071	583
FIRST/PREMIUM 1200	1200 × 640 × 523	1028 × 474 × 320	1188	1000	1071	583
FIRST/PREMIUM 1500	1500 × 640 × 603	1328 × 474 × 400	1188	1000	1151	663
PREMIUM 1000TB	1000 × 800 × 743	828 × 634 × 540	1508	1263	1451	803
PREMIUM 1200TB	1200 × 800 × 743	1028 × 634 × 540	1508	1263	1451	803
PREMIUM 1500TB	1500 × 800 × 743	1328 × 634 × 540	1508	1263	1451	803

Complete security guaranteed!

90 % of all safes that are attacked are broken into . . . Not WALDIS safes!

Safe break-ins (source: PKS 2006 + 2013):

Break-in process...

Burglars leave the house after one minute. Provided that the safe owner does everything right!

No burglar is looking for a safe. Burglars are looking for money and jewellery. No matter where they get into the house, their first target is the office or the bedroom. In most cases, these rooms are a complete write-off.

Safes should not be disguised or hidden in the cellar. They should be in the office or close to the bedroom. Safes must be seen within the first minute. All burglars know that what they are looking for is locked inside them. This means they will not search any further.

Now they will examine the safe. Do not buy any safe with a key lock. Because burglars will go looking for the key. The furniture all over the house will be destroyed within 5 minutes. More than 20 % of keys are found.

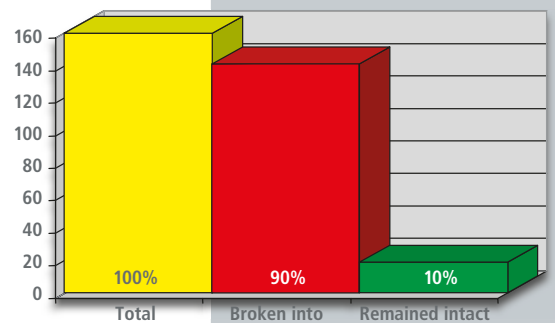
The safe is then examined by knocking on the doors and walls. If a hollow sound is heard, there will certainly be an attack. Hinges located on the outside and a large gap between doors and frames also induce burglars to carry out an attack.

The last thing they will try is to take the safe away with them. A good safe is mounted at a minimum of 4 points at the back and/or 4 points at the bottom.

Burglars want to break in within the shortest possible time. However, if they discover that there is no hope of success, they will leave your house and will not cause any more damage.

Our philosophy is continuously confirmed by our customers who have experienced a burglary. But take note: this security philosophy only works with a good safe. Unfortunately, according to police statistics, almost 90 % of safes are nevertheless broken into as a result of being attacked.

We provide a written warranty against burglary for all WA safes that have been tested in accordance with EN1143-1.





Head office / Showroom

WALDIS Tresore AG
Hofwisenstrasse 20
CH-8153 Rümlang
Tel. 043 211 12 00
Fax 043 211 12 12
Email info@tresore.ch
www.tresore.ch

Showroom for French-speaking Switzerland

WALDIS Tresore SA
Rue de l'Ouriette 141
CH-1170 Aubonne VD
Tél. 021 807 02 63
Email info@coffrefort.ch
www.coffrefort.ch

Further WALDIS security products

- Safes
- Vaults
- Armored doors
- Customer safe deposit boxes
- Security cabinets for the retail trade
- Fireproof cabinets
- Furniture safes
- Hotel room safes

WALDIS services

- Consultancy
- Expert reports
- Security concepts
- Customer services
- Maintenance, repairs
- Safe insurances
- Safe leasing
- Safe transport

