



OPERATING INSTRUCTIONS

SAFE LOCK CAWI 7215

Electronic door lock for WA safes

Issue 08.2020

Thank you very much

We would like to thank you for choosing Waldis when it comes to safety.

When buying a safe, you have chosen a product tested according to EN1143-1. A Swiss quality product with VdS - tested security.

Please read these instructions carefully before commissioning your safe!

Your contact for questions

WALDIS Tresore AG

Hofwissenstrasse 20

CH-8153 Rümlang

Phone: +41 43 211 12 00

Fax: +41 43 211 12 12

E-Mail: info@tresore.ch

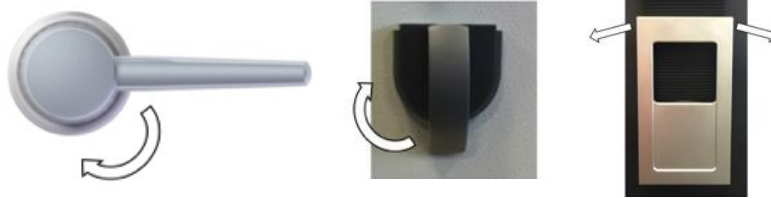
Table of contents

1. Safe lock	1
1.1. General notes	1
1.1.1. Closed position	1
1.1.2. Opening the lock	1
1.1.3. Closing the lock.....	2
2. Code Programming	3
1.2. Code programming menu	3
3. Power supply.....	4
3.1. General.....	4
4. Password	5
4.1. General basic rules.....	5
4.1.1. Avoid obvious passwords.....	5
4.1.2. Tips	5
4.1.3. Last but not least.....	5

1. Safe lock

1.1. General notes

1.1.1. Closed position



➡ = Move to the "OPEN" position. (Turn in the direction of the arrow to open the safe).

1.1.2. Opening the lock

First turn the opening rotary handle to the closed position. This relieves the load on the lock bolt.

The factory code is C-0-1-2-3-4-5-6

Procedure

1. The lock is in "sleep position" and must first be activated by pressing key C (approx. 2 seconds)
2. Enter the correct opening code (for initial start-up C0 1 2 3 4 5 6), the green LED flashes 1 time and the high-low signal tone sounds
3. If the opening rotary handle is not turned clockwise to the open position within 10 seconds, the lock is secured again
4. Turn the opening rotary handle clockwise to the open position and pull the door open - If the door or the bolt mechanism remains open for longer than 10 seconds, the lock beeps 10 times to indicate that it is in a pretension position
5. Each keystroke is acknowledged with a "beep", pauses longer than 5 seconds delete the previous entry; or if an incorrect code entry is made, the entry can be deleted with the "C" key.
6. If an incorrect entry is made, the red LED lights up and a high-pitched signal tone sounds 12 times. After 3 incorrect entries, the lock is blocked for approx. 12 secondsEach further incorrect entry extends the blocking time by an additional 12 secondsDuring the blocking time, the red LED flashes every 5 seconds. The end of the locking period is indicated by the green LED lighting up and a low-high signal tone.
7. After the expiration of any lockout time, the correct code must be entered and the lock can be opened


1.1.3. Closing the lock

Close the safe door. Turn the opening handle counterclockwise to the closed position (horizontal). The lock closes automatically and is thus secured.

2. Code Programming

1.2. Code programming menu

ATTENTION: All code reprogramming must be carried out with the door open!

Edit  from point to point, always within 10 seconds

Procedure

1. Open door and press *keys *immediately
2. previous code, e.g. 1 2 3 4 5 6 and *enter (factory code)
3. new code e.g. 1 1 2 2 and enter*
4. again new code 1 1 2 2 and enter*

Important: For security reasons, you should change the factory code immediately after delivery. Please do not use your own birthday or similar known data. Please close the bolt work with the door open and open the lock 2-3 times with the newly programmed code.

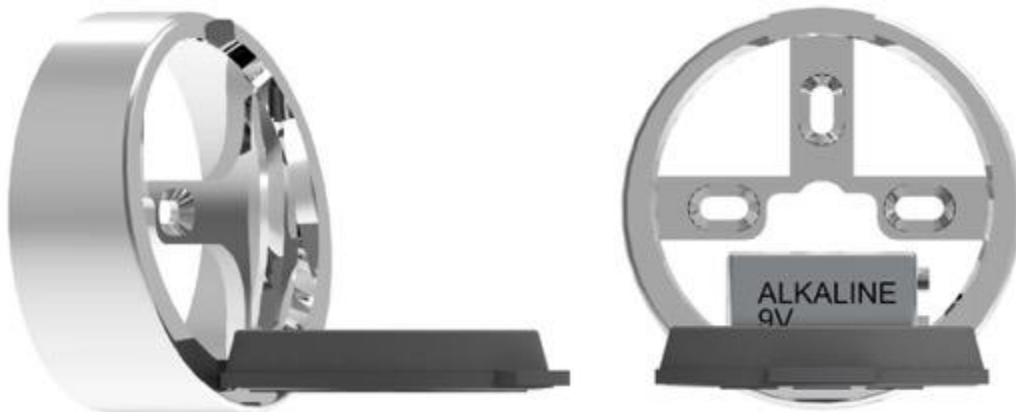
3. Power supply

3.1. General

If the battery voltage is insufficient, after entering the opening code, a high-pitched warning tone is emitted 10 times and the red and green LEDs flash alternately 10 times. The battery should be replaced within the next few days.

The lock is powered by a **9V ALKALINE** block battery.

After changing the battery, enter the valid opening code C0 X X X X X. A triple beep signal then sounds, enter opening code C0 X X X X X X again and the lock opens.



4. Password

4.1. General basic rules

4.1.1. Avoid obvious passwords

- No trivial values like 000000, 0815, 123456
- Do not use your own birthday, car license plate, phone number or name (your own, wife/husband, children, pets, company, place of residence, etc.) as password. Do not use standard passwords like: "password" or "safe".
- Writing backwards is also too easy
- Do not use a password that you already use
- Important passwords should not have a logical structure

4.1.2. Tips

- The first rule: **A password is only secure if it remains secret!**
- Remember passwords - don't write them down anywhere!
- Consider all keys if possible (wear marks on the keyboard betray the individual numbers over time)

4.1.3. Last but not least

Consider how the password will still be retained if the owner can no longer disclose the password (e.g., in the event of death). Leave a sealed envelope with your notary.

